

Book your accommodation



with Mary's Agency

and enjoy your

study program in Prague !

Mary's Travel Agency is located in the center of Prague and has been on the market from 1991. The basic product is accommodation in all categories within Prague and the Czech Republic as well as other services connected with the incoming travel industry.

We are members of the Association of Tour Operators and Travel Agencies of the Czech Republic (AČCKA) .

Our agency is recommended by guide-books Lonely Planet, Rough Guide, Time-Out, Petit Fute and Prague in your pocket.

Accommodation

Mary's Agency offers apartments in the center of Prague, in a walking distance to the CERGE educational center.

All the apartments are fully furnished and equipped with all necessary conveniences.

All apartments have internet connection, bed linen and towels, most of them have fully equipped kitchen (dishes, silverware, stove, microwave, fridge, kettle, toaster).

All apartments have been personally checked by our staff and are well recommended !

Luxurious apartments

Standard apartments

Budget apartments



NÁRODNÍ DIVADLO APARTMENT HOUSE

Location: Prague city center, Ostrovní street, close to the National Theatre

Connection to CERGE-EI Educational Center: 15-20 minutes on foot
or 5 minutes by direct tram (night tram service as well)

Building: newly reconstructed with a lift, reception, security camera

Vicinity: tram stop, metro station, department store, grocery, restaurants, cafés, bakery

Available apartments: 1-bedroom apartments, two-bedroom apartments

Total capacity: 28

Additional service: safe in apartments

Distance to important points:

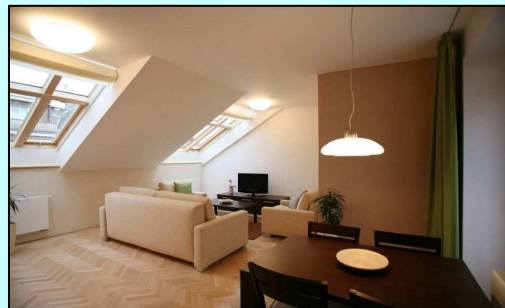
CERGE-EI Educational Center:	0,75 miles
Wenceslav Square	0,43 miles
Old Town Square	0,6 miles
Main Railway Station	1,12 miles
Prague Castle	1,37 miles
The closest metro station (line "B")	0,125 miles

APARTMENTS´ DESCRIPTION

ONE-BEDROOM APARTMENTS

Capacity	2 persons	Bathroom	1
Lift	yes	Shower	yes
Size	63-83 m ²	Bath-tub	yes
Bedrooms	1	Washing machine	yes
Beds	2	Dryer	no
Living room	yes	Iron	yes
Satellite TV	yes	Ironing board	yes
Internet wifi	no	Hair dryer	yes
Internet cable	yes (2x)	Bed linen and towels	yes
Fully equipped kitchen	yes	Cleaning service	yes
Dishwasher	yes	Balcony	no
Dining area	yes	Airconditioned	yes

Price: from 21.000 CZK/person/month
(exact price on request)

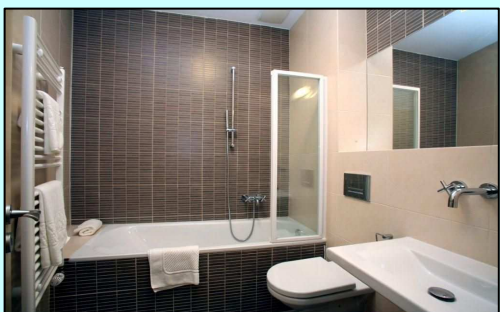
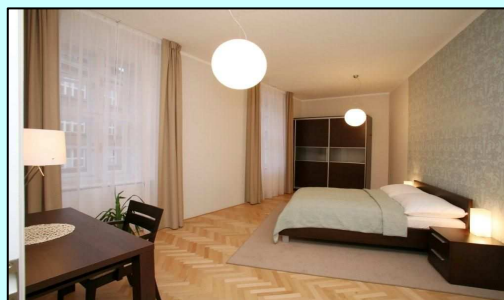
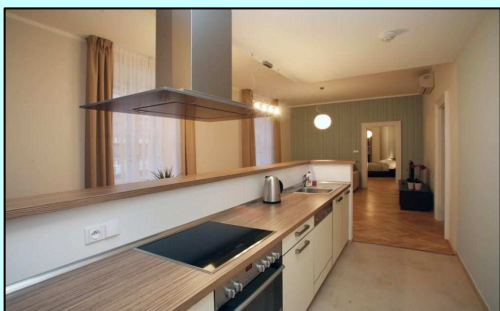
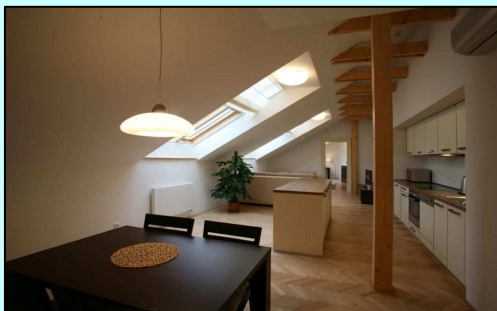
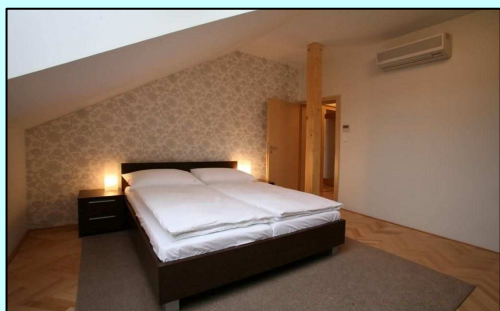


TWO-BEDROOM APARTMENTS

Capacity	4 persons	Bathroom	1
Lift	yes	Shower	yes
Size	92-97 m ²	Bath-tub	yes
Bedrooms	2	Washing machine	yes
Beds	4	Dryer	no
Living room	yes	Iron	yes
Satellite TV	yes	Ironing board	yes
Internet wifi	no	Hair dryer	yes
Internet cable	yes (3x)	Bed linen and towels	yes
Fully equipped kitchen	yes	Cleaning service	yes
Dishwasher	yes	Balcony	no
Dining area	yes	Airconditioned	yes

Price: from 21.000 CZK/person/month
(exact price on request)

GALLERY



ALBERTOV APARTMENT HOUSE

Location: Albertov district, near Vysehrad castle, very close to the city center

Connection to CERGE-EI Educational Center: 25 minutes on foot
or 10 minutes by tram (night tram service as well)

Building: brand new complex of buildings, with reception and security

Vicinity: shopping mall inside the complex, restaurants, botanic garden, vineyard nearby

Available apartments: 2-bedroom apartments

Total capacity: 16

Distance to important points:

CERGE-EI Educational Center:	1,37 miles
Wenceslav Square	1,06 miles
Old Town Square	1,43 miles
Main Railway Station	1,37 miles
Prague Castle	2,43 miles

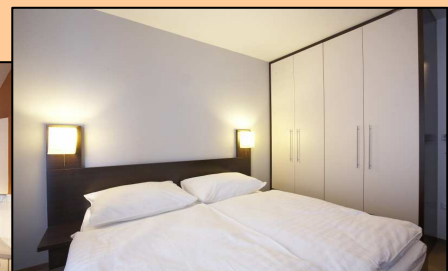
APARTMENTS´ DESCRIPTION

STANDARD APARTMENTS (up to 68 m²)

Number of available standard apartments: 3

Capacity	4 persons	Separated toilet	yes
Lift	yes	Shower	yes
Bedrooms	2	Bath-tub	no
Beds	4	Washing machine	yes
Living room	yes	Dryer	yes
Satellite TV	yes	Iron	yes
Internet wifi	yes	Ironing board	yes
Internet cable	no	Hair dryer	yes
Fully equipped kitchen	yes	Bed linen and towels	yes
Dishwasher	yes	Cleaning service	upon request
Dining area	yes	Balcony	yes
Bathroom	1	Airconditioned	no

Price (if occupied by 4 persons) from 12.500,- CZK/person/month



LARGE APARTMENT (98 m²)

Number of available large apartments: 1

Capacity	4 persons	Separated toilet	yes
Lift	yes	Shower	yes
Bedrooms	2	Bath-tub	yes
Beds	4	Washing machine	yes
Living room	yes	Dryer	yes
Satellite TV	yes	Iron	yes
Internet wifi	yes	Ironing board	yes
Internet cable	no	Hair dryer	yes
Fully equipped kitchen	yes	Bed linen and towels	yes
Dishwasher	yes	Cleaning service	upon request
Dining area	yes	Balcony	garden
Bathroom	1	Airconditioned	no

Price (if occupied by 4 persons): 18.000,- CZK/person/month



OSTROVNÍ APARTMENT HOUSE

Location: Prague city center, Ostrovní street, close to the National Theatre

Building: residence apartment house with recently renovated interior

Vicinity: tram stop, metro station, department store, grocery, restaurants, cafés, bakery

Number of available apartments in the building: 2

Total capacity: 8

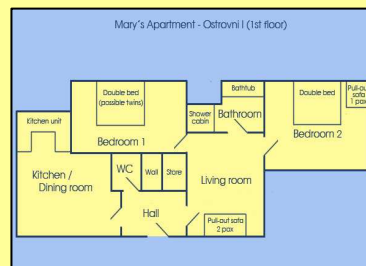
Distance to important points:

CERGE-EI Educational Center:	0,75 miles
Wenceslav Square	0,43 miles
Old Town Square	0,6 miles
Main Railway Station	1,12 miles
Prague Castle	1,37 miles
The closest metro station (line "B")	0,125 miles
The closest tram station (lines 6,9,18,21,22)	0,125 miles

OSTROVNÍ I APARTMENT

Capacity	4 persons	Bathroom	1
Floor	1st	Separated toilet	yes
Lift	yes	Shower	yes
Size	100 m ²	Bath-tub	yes
Bedrooms	2	Washing machine	yes
Beds	4	Dryer	no
Living room	yes	Iron	yes
Satellite TV	yes	Ironing board	yes
Internet wifi	on request	Hair dryer	yes
Internet cable	no	Bed linen and towels	yes
Fully equipped kitchen	yes	Cleaning service	yes
Dishwasher	no	Balcony	yes
Dining area	yes	Airconditioned	no

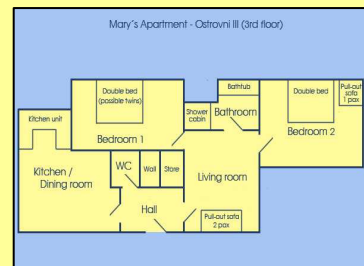
Price (if occupied by 4 persons) 15.000 CZK/person/month



OSTROVNÍ III APARTMENT

Capacity	4 persons	Bathroom	1
Floor	3rd	Separated toilet	yes
Lift	yes	Shower	yes
Size	100 m	Bath-tub	yes
Bedrooms	2	Washing machine	yes
Beds	4	Dryer	no
Living room	yes	Iron	yes
Satellite TV	yes	Ironing board	yes
Internet wifi	on request	Hair dryer	yes
Internet cable	no	Bed linen and towels	yes
Fully equipped kitchen	yes	Cleaning service	yes
Dishwasher	no	Balcony	yes
Dining area	yes	Airconditioned	no

Price (if occupied by 4 persons): 15.000 CZK/person/month



ŽIŠKOV APARTMENT HOUSE

Location: Krásova street, very close to the city center

Connection to CERGE-EI Educational Center: 15-20 minutes on foot or 5 minutes by a direct tram (night tram service as well)

Building: lift

Vicinity: tram stop, little shops, large park, fitness center, swimming pool

Number of available apartments in the building: 4

Total capacity: 16

Distance to important points:

CERGE-EI Educational Center:	1,12 miles
Wenceslav Square	1,12 miles
Old Town Square	1,25 miles
Main Railway Station	1 mile
Prague Castle	2,5 miles

APARTMENT NO. 1

Capacity	4 persons	Bathroom	1
Floor	2nd	Separated toilet	yes
Lift	yes	Shower	no
Size	85 m ²	Bath-tub	yes
Bedrooms	2	Washing machine	yes
Beds	4	Dryer	no
Living room	yes	Iron	yes
Satellite TV	yes	Ironing board	yes
Internet wifi	no	Hair dryer	yes
Internet cable	yes	Bed linen and towels	yes
Fully equipped kitchen	yes	Cleaning service	upon request
Dishwasher	yes	Balcony	no
Dining area	yes	Airconditioned	no

Price (if occupied by 4 persons) 12.500 CZK/person/month



APARTMENT NO. 2

Capacity	4 persons	Bathroom	1
Floor	3rd	Separated toilet	yes
Lift	yes	Shower	no
Size	85 m ²	Bath-tub	yes
Bedrooms	2	Washing machine	yes
Beds	4	Dryer	no
Living room	yes	Iron	yes
Satellite TV	yes	Ironing board	yes
Internet wifi	no	Hair dryer	yes
Internet cable	yes	Bed linen and towels	yes
Fully equipped kitchen	yes	Cleaning service	upon request
Dishwasher	yes	Balcony	no
Dining area	yes	Airconditioned	no

Price (if occupied by 4 persons) 12.500 CZK/person/month



APARTMENT NO. 3

Capacity	4 persons	Bathroom	1
Lift	yes	Shower	no
Size	85 m ²	Bath-tub	yes
Bedrooms	2	Washing machine	yes
Beds	4	Dryer	no
Living room	yes	Iron	yes
Satellite TV	yes	Ironing board	yes
Internet wifi	no	Hair dryer	yes
Internet cable	yes	Bed linen and towels	yes
Fully equipped kitchen	yes	Cleaning service	upon request
Dishwasher	yes	Balcony	no
Dining area	yes	Airconditioned	no

Price (if occupied by 4 persons) 12.500 CZK/person/month



APARTMENT NO. 4

Capacity	4 persons	Bathroom	1
Floor	4st	Separated toilet	yes
Lift	yes	Shower	no
Size	85 m ²	Bath-tub	yes
Bedrooms	2	Washing machine	yes
Beds	4	Dryer	no
Living room	yes	Iron	yes
Satellite TV	yes	Ironing board	yes
Internet wifi	no	Hair dryer	yes
Internet cable	yes	Bed linen and towels	yes
Fully equipped kitchen	yes	Cleaning service	upon request
Dishwasher	yes	Balcony	no
Dining area	yes	Airconditioned	no

Price (if occupied by 4 persons) 12.500 CZK/person/month



WENCESLAV SQUARE APARTMENT HOUSE

Location: Directly in the city center, Wenceslav Square

Building: modern building with reception and security

Vicinity: tram stops, metro station, restaurants, shops, cafés, banks, etc.

Available apartments: 1 x four-bedroom apartment, 1 x three-bedroom apartment,
3 x two-bedroom apartment, 3 x one-bedroom apartment

Total capacity: 31

Distance to important points:

CERGE-EI Educational Center:	0,3 miles
Wenceslav Square	directly there
Old Town Square	0,6 miles
Main Railway Station	0,5 miles
Prague Castle	1,8 miles

APARTMENTS' DESCRIPTION

FOUR-BEDROOM APARTMENT

Capacity	7 persons	Bathroom	2
Lift	yes	Shower	yes
Size	130 m ²	Bath-tub	yes
Bedrooms	4	Washing machine	yes
Beds	7	Dryer	no
Living area	yes	Iron	yes
Satellite TV	yes	Ironing board	yes
Internet wifi	yes	Hair dryer	yes
Internet cable	no	Bed linen and towels	yes
Fully equipped kitchen	yes	Cleaning service	yes (weekly)
Dishwasher	yes	Balcony	no
Dining area	yes	Airconditioned	no

Price (if occupied by 7 persons) 15.000 CZK/person/month



THREE-BEDROOM APARTMENT

Capacity	6 persons	Bathroom	2
Lift	yes	Shower	yes
Size	115 m ²	Bath-tub	yes
Bedrooms	3	Washing machine	yes
Beds	6	Dryer	no
Living area	yes	Iron	yes
Satellite TV	yes	Ironing board	yes
Internet wifi	yes	Hair dryer	yes
Internet cable	no	Bed linen and towels	yes
Fully equipped kitchen	yes	Cleaning service	yes (weekly)
Dishwasher	yes	Balcony	no
Dining area	yes	Airconditioned	no

Price (if occupied by 6 persons) 15.000 CZK/person/month



TWO-BEDROOM APARTMENT

Capacity	4 persons	Bathroom	1
Lift	yes	Shower	yes
Size	70-80 m ²	Bath-tub	yes
Bedrooms	2	Washing machine	yes
Beds	4	Dryer	no
Living area	yes	Iron	yes
Satellite TV	yes	Ironing board	yes
Internet wifi	yes	Hair dryer	yes
Internet cable	no	Bed linen and towels	yes
Fully equipped kitchen	yes	Cleaning service	yes (weekly)
Dishwasher	yes	Balcony	no
Dining area	yes	Airconditioned	no

Price (if occupied by 4 persons) 15.000 CZK/person/month



ONE-BEDROOM APARTMENT

Capacity	2 persons	Bathroom	1
Lift	yes	Shower	yes
Size	50-60 m ²	Bath-tub	yes
Bedrooms	1	Washing machine	yes
Beds	2	Dryer	no
Living area	yes	Iron	yes
Satellite TV	yes	Ironing board	yes
Internet wifi	yes	Hair dryer	yes
Internet cable	no	Bed linen and towels	yes
Fully equipped kitchen	yes	Cleaning service	yes (weekly)
Dishwasher	yes	Balcony	no
Dining area	yes	Airconditioned	no

Price (if occupied by 2 persons) 15.000 CZK/person/month



KONEVOVA APARTMENT HOUSE

Location: Konevova street, residential area, close to city center.

Building: modern building with reception

Vicinity: shops, restaurants, foreigner police nearby

Available apartments: 4 x studio, 3 two-bedroom apartment, 1 three-bedroom apartment

Total capacity: 26

Distance to important points:

CERGE-EI Educational Center:	1,6 miles
Wenceslav Square	1,6 miles
Old Town Square	1,7 miles
Main Railway Station	1,5 miles
Prague Castle	3 miles
The closest metro station (line "B")	0,68 miles
The closest tram station (lines 5,9,10,16)	0,62 miles

APARTMENTS´ DESCRIPTION

THREE-BEDROOM APARTMENTS

Number of available three-bedroom apartments: 1

Capacity	6 persons	Bathroom	2
Lift	yes	Shower	yes
Size	110 m ²	Bath-tub	yes
Bedrooms	3	Washing machine	no (loundry room)
Beds	6	Dryer	no
Living room	yes	Iron	upon request
Satellite TV	yes	Ironing board	upon request
Internet wifi	no	Hair dryer	yes
Internet cable	yes	Bed linen and towels	yes
Fully equipped kitchen	yes	Cleaning service	upon request
Dishwasher	no	Balcony	yes
Dining area	yes	Airconditioned	no

Price (if occupied by 6 persons) 14.000,- CZK/person/month



TWO-BEDROOM APARTMENTS

Number of available three-bedroom apartments: 3

Capacity	4 persons	Bathroom	2
Lift	yes	Shower	yes
Size	100 m ²	Bath-tub	yes
Bedrooms	2	Washing machine	no (lountry room)
Beds	4	Dryer	no
Living room	yes	Iron	upon request
Satellite TV	yes	Ironing board	upon request
Internet wifi	no	Hair dryer	yes
Internet cable	yes	Bed linen and towels	yes
Fully equipped kitchen	yes	Cleaning service	upon request
Dishwasher	no	Balcony	some
Dining area	yes	Airconditioned	no

Price (if occupied by 4 persons) 14.500,- CZK/person/month



STUDIO 1 ROOM

Number of available three-bedroom apartments: 4

Capacity	2 persons	Bathroom	1
Lift	yes	Shower	no
Size	60 m ²	Bath-tub	yes
Bedrooms	no bedroom	Washing machine	no (lountry room)
Beds	2	Dryer	no
Living room	yes	Iron	upon request
Satellite TV	yes	Ironing board	upon request
Internet wifi	no	Hair dryer	yes
Internet cable	yes	Bed linen and towels	yes
Fully equipped kitchen	yes	Cleaning service	upon request
Dishwasher	no	Balcony	yes
Dining area	yes	Airconditioned	no

Price (if occupied by 4 persons) 17.500,- CZK/person/month



ŠTĚPÁNSKÁ APARTMENT HOUSE

Location: Directly in the city center, Štěpánská street

Connection to CERGE-EI Educational Center: 10 minutes on foot

Building: lift, laundry room

Vicinity: tram stops, metro station, restaurants, shops, cafés and many more

Number of available apartments in the building: 3 x large apartment, 3 x small apartment

Total capacity: 18

Distance to important points:

CERGE-EI Educational Center:	0,43 miles
Wenceslav Square	0,1 miles
Old Town Square	0,68 miles
Main Railway Station	0,68 miles
Prague Castle	1,8 miles

APARTMENTS´ DESCRIPTION

LARGE APARTMENTS

Capacity	5-6 persons	Bathroom	1
Lift	yes	Shower	yes
Size	80-110 m ²	Bath-tub	yes
Bedrooms	2-3	Washing machine	no (laundry room)
Beds	5-6	Dryer	no
Living area	yes	Iron	on request
Satellite TV	yes	Ironing board	on request
Internet wifi	yes	Hair dryer	no
Internet cable	no	Bed linen and towels	yes
Kitchenette	yes	Cleaning service	yes
Dishwasher	no	Balcony	some
Dining area	yes	Airconditioned	no

Price (in case of full occupancy) 9.500 CZK/person/month



SMALL APARTMENTS

Capacity	2 persons	Bathroom	1
Lift	yes	Shower	yes
Size	approx. 50m ²	Bath-tub	some
Bedrooms	1	Washing machine	no (laundry room)
Beds	2	Dryer	no
Living area	yes	Iron	on request
Satellite TV	yes	Ironing board	on request
Internet wifi	yes	Hair dryer	no
Internet cable	no	Bed linen and towels	yes
Kitchenette	yes	Cleaning service	yes
Dishwasher	no	Balcony	some
Dining area	yes	Airconditioned	no

Price (if occupied by 2 persons) 14.000 CZK/person/month

